



**Staff Travel
Information**


Guildford
Business **Park**

This booklet has been created to help you to save money, improve your health and wellbeing and enhance the local environment, by outlining the available transport modes.

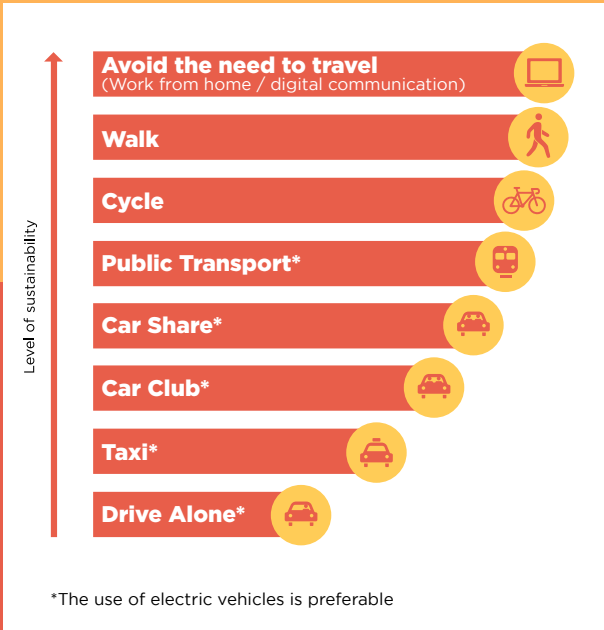
It provides you with information on your transport options locally, as well as incentives, including:

- **Walking and Cycling Routes;**
- **Bus and Rail Information; and**
- **Car Sharing.**

The information is provided to help you use the most sustainable forms of travel when travelling to/from work. Particularly for short journeys, try to avoid using the car or overcrowded public transport services and walk or cycle instead.

A map of the area showing key facilities, amenities, routes and services located close to Guildford Business Park is included, so you can see which lie within a walkable/cyclable distance.

We hope you will find this leaflet helpful. Keep it to hand and refer to it as often as required, to familiarise yourself with the locality and the available transport options. You may also find the travel and journey planning information available at: <https://www.surreycc.gov.uk/roads-and-transport> useful.



Did you know...

Regular walking reduces the risk of type 2 diabetes and certain cancers by 50% (NHS)

Walking

For short/local journeys, walking can provide a free form of travel that is also a great form of exercise. To help you find your way, a map is provided detailing routes and locations that may be of interest to you...

Guildford Business Park is within easy reach of local retail facilities (where you can get lunch) and leisure uses (which you may like to visit before/after work). Guildford town centre is also walkable in approximately 30 minutes.

The locale benefits from well-lit, wide pedestrian footways and crossings with dropped kerbs and tactile paving, creating a safe and pleasant walking environment. Furthermore, a pedestrian footbridge crossing both the A3 and A25 can be accessed from the northern end of Middleton Industrial Road, providing easy access to Woodbridge Hill and its amenities.

Cycling

Over short distances, cycling is often quicker and cheaper than using a car and more flexible than using public transport. A shared cycle/footway runs along the A25 from the Boxgrove Crossroads Roundabout, providing a convenient route for commuters travelling to/from the eastern suburbs of Guildford.

From the town centre, cyclists can make use of the cycle path which straddles the western bank of the River Wey or Walnut Tree Close which has formalised lanes along part of its length. In addition, if travelling to/from the north you can use the informal cycle lanes which run along the A322 Worplesdon Road and A323 Aldershot Road before travelling along Woodbridge Hill. If required, a bike repair station is located in the Unit 2 cycle store.

The Surrey County Council Cycle Facility Map shows the cycle routes around Guildford and can be accessed here: <https://www.surreycc.gov.uk/roads-and-transport/cycling-and-walking/cycle-network>.

For more information on cycling, consider joining the membership organisations: Cycling UK and British Cycling.

If you are in the market for a new bicycle, why not see if your employer offers a Cycle to Work scheme for eligible employees, whereby you can purchase a bicycle through monthly salary sacrifice and save by not paying tax and National Insurance contributions on the payments.

Also keep an eye out for the town-wide e-bike hire scheme which is scheduled to launch in Summer 2024. You can sign up for updates here:

<https://guildfordebikes.commonplace.is>.

Bus travel

Buses are a great way of travelling without the hassle of parking, petrol and car maintenance costs.

The nearest bus stops to the Guildford Business Park are the 'Woodbridge Meadows' stops located circa 3 minutes' walk to the north-east. These stops, which are equipped with a shelter, seating and electronic bus timetable information, provide services to a range of destinations including Aldershot, Guildford Bus Station, Pitch Place, Royal Surrey County Hospital and Woking.

Timetables and route maps for all services can be found at: www.traveline.info.

Guildford Business Park Shuttle Bus

A shuttle bus service specifically for Guildford Business Park employees operates between Guildford train station, the town centre and the business park. These buses run every 10 minutes from 07:30-18:00, with a journey time of less than 8 minutes. Ask your employer or contact the Travel Plan Coordinator (details below) to find out more. Furthermore, to reduce emissions, in the near future, the shuttle service will be operated using an electric vehicle.



Train travel

Accessible by way of the shuttle bus or a 20 minute walk, Guildford railway station is located on the London to Portsmouth Line, North Downs Line & New Guildford Line and provides connections to a range of destinations across the south-east.

The station is equipped with toilets, waiting rooms, a post box, Wi-Fi, cash machines, shops and cafes. 378 sheltered bike storage spaces, monitored by CCTV are also available within Car Parks 1 & 2 as well as a Brompton Bike hire dock: <https://bromptonhire.com>.

Live arrival/departure information, details of fares and station facilities can be obtained from: www.nationalrail.co.uk.

Driving

While parking, to include electric vehicle charging provision, is provided at Guildford Business Park, you are encouraged to travel by the range of available sustainable travel modes contained within this leaflet, wherever possible.

Car Sharing

Your commute may be similar to that of another person living nearby, why not visit www.liftshare.com and find people to share with?

Sharing just one day a week results in significant reductions in both pollution and traffic.

Also you don't have to own a car to car-share, you can sign-up as a passenger and help share fuel costs!



Car Clubs

Car clubs provide an alternative to using a private car. Cars are used on a pay-as-you-go basis. The cost of usage is based on how long the car is used for and the distance driven and can often work out cheaper than owning and running a car privately. Typically, cars are rented online and can be collected and returned 24 hours a day. Car club vehicles also make great pool cars for businesses.

Enterprise (<https://www.enterprisecarclub.co.uk/gb/en/home.html>) are the sole car club operator in Guildford. The closest vehicle to the business park, a Renault Zoe, is located approximately 10 minutes' walk away on Walnut Tree Close at Bankside Student Living.

Enterprise Car Club are offering all Surrey residents reduced price membership of just £10 per year (normally £60) for the first two years, plus a £10 driving credit when you join. Just quote the promotional code **SURREY44**.

Did you know...

52% of all particle emissions came from tyres and brakes (Imperial College London, 2021)

Taxi

Using a taxi may be preferable, especially if you have lots to carry.

A taxi rank is available at the station, alternatively the following operators serve the local area and can be prebooked in advance: A3 Cars & Airport Taxis – 01483 300011, Silverline Taxis – 01483 666777 and GM Cars Guildford – 01483 720720.

BetterPoints

Surrey Council Council have partnered with BetterPoints to use their app to run a free rewards challenge for anyone who lives, works or studies in Surrey.

Throughout the Surrey's Greener Future challenge there are thousands of pounds' worth of rewards and prizes up for grabs by choosing to walk, cycle or catch the bus or train in Surrey. Rewards can be traded for a variety of local and national vouchers, including free coffees and money off your supermarket shop.



Download the free app here: <https://surrey.betterpoints.app/> or by scanning the QR code and enter the code **GBP** to be eligible for specific rewards.



Spirit Discount Card

Discounts and promotions have been secured for Guildford Business Park employees at a range of food and retail outlets in Guildford, as well as at a number of leisure and entertainment attractions.

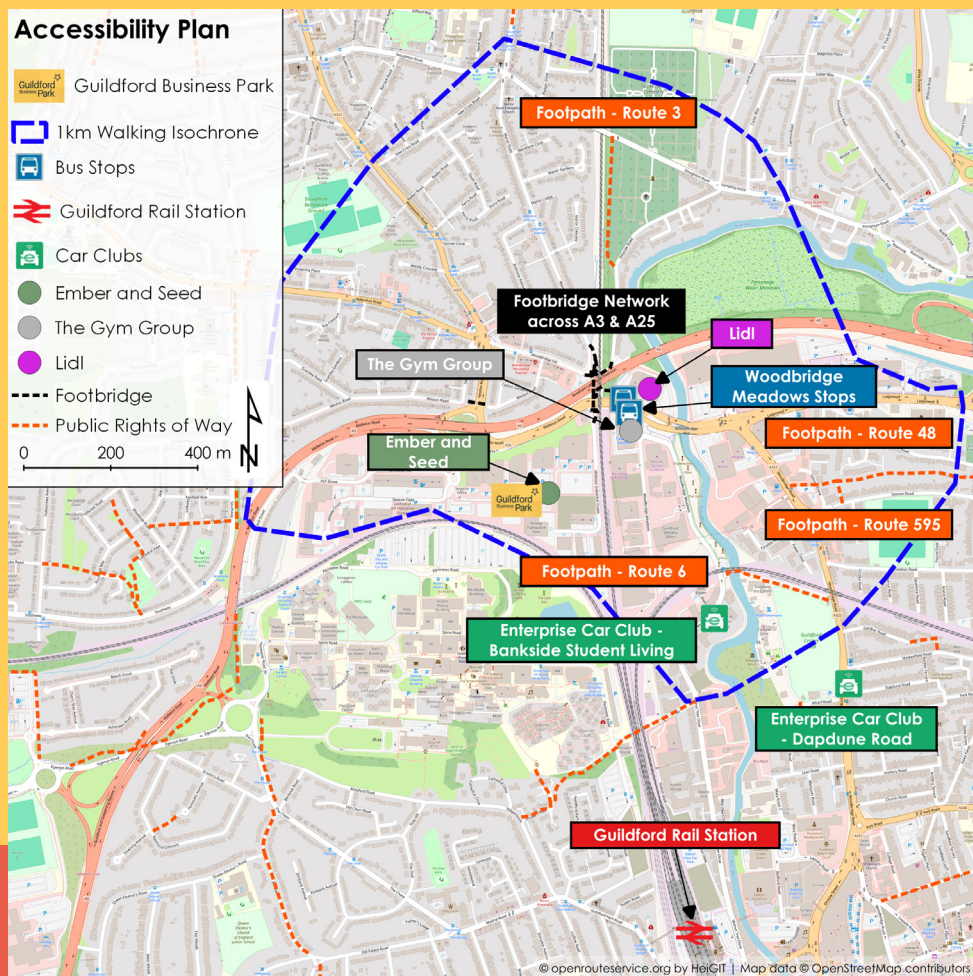
Email info@gbpspirit.com to register for your privilege card and sign-up to the weekly Spirit email and discover all that's going on.

Did you know...

Physically active employees take 27% fewer days of sick leave (Physical Activity Taskforce)



Travel Map



Did you know...

Regular cyclists enjoy the general health of someone approximately 10 years younger (British Cycling)

National Events to get involved with

Walk to Work Day April

Bike Week June

European Mobility Week September

National Liftshare Week October

Road Safety Week November

Travel Plan Coordinator

If you have any transport/travel related questions or thoughts these can be directed to the Guildford Business Park Travel Plan Coordinator **Zoe Dziwulski** (zoe.dziwulski@care-facilities.com / 07557 763 783).

